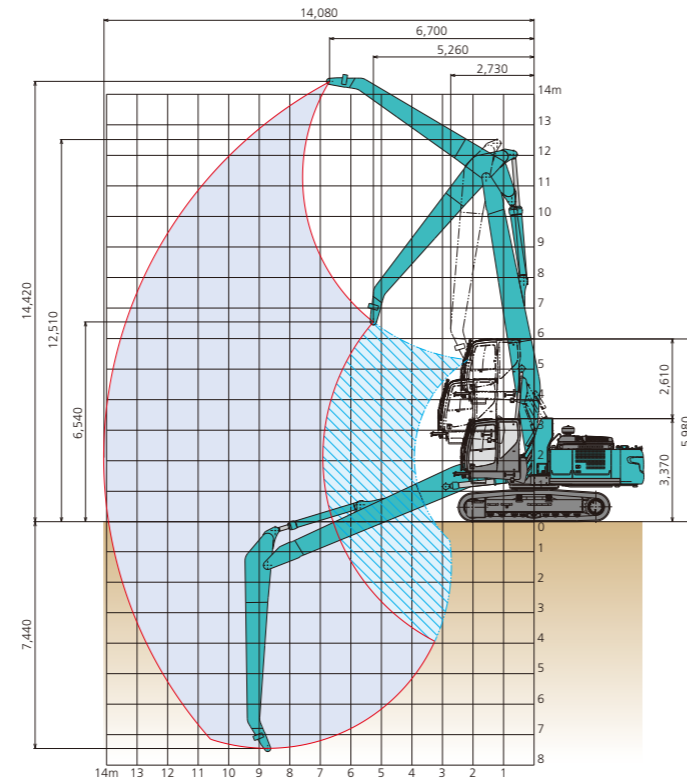


■ Specifications

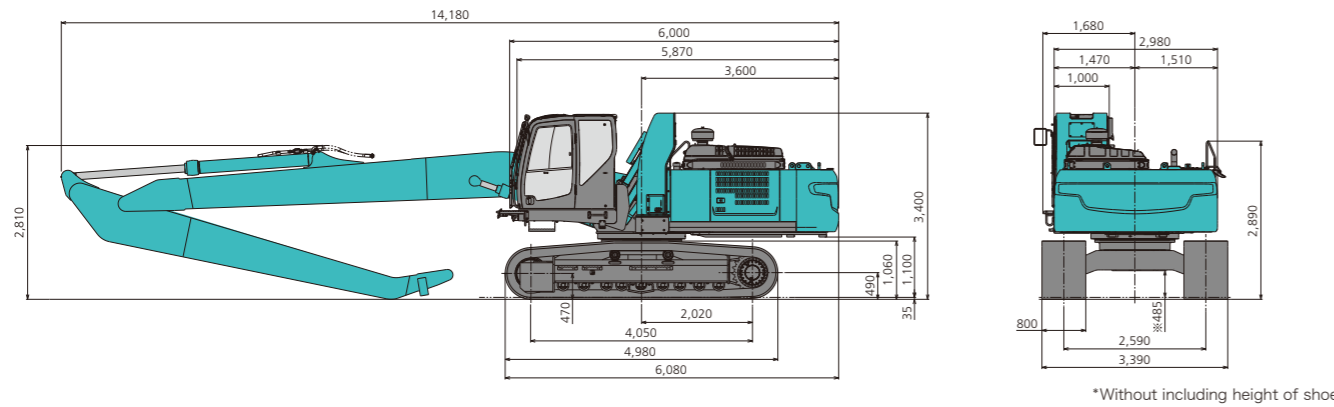
|                             |   |
|-----------------------------|---|
| MODEL                       | SK350DLC  |
| Type                        | SK350DLC-10   |
| <b>Performance</b>          |   |
| Swing speed                 | 6.4 min <sup>-1</sup>   |
| Travel speed (high / low)   | 5.6 / 3.3 km/h  |
| Gradeability                | 70%   |
| <b>Weight</b>               |   |
| Operating weight *          | 44,200 kg   |
| Ground pressure *           | 62 kPa  |
| <b>Engine</b>               |   |
| Model                       | HINO J08E-EUN-KSDS  |
| Type                        | Direct injection, water-cooled, 4-cycle, 6-cylinderdiesel engine with intercooler turbo-charger |
| Power output                | 188 kW / 2,100 min <sup>-1</sup> (ISO 9249)<br>200 kW / 2,100 min <sup>-1</sup> (ISO 14396)     |
| Max. torque                 | 969 N-m / 1,600 min <sup>-1</sup> (ISO 9249)<br>998 N-m / 1,600 min <sup>-1</sup> (ISO 14396)   |
| Displacement                | 7.684 L   |
| Fuel Tank                   | 580 L   |
| <b>Hydraulic System</b>     |   |
| Relief Valve Setting        | 34.3 MPa  |
| Hydraulic Oil Tank (system) | 245 L (410 L)   |

\*except for front attachment

■ Working Range (Unit : mm)



■ Dimensions (Unit : mm)



■ Equipment & Accessories:

**Standard Equipment** • Standard cab (with 2-window protective guard) • Rotation and F&G auxiliary circuits and piping • 800mm even height grouser shoes • Suspension seat with arm rests • Reinforced track guides • Double element air cleaner • Hydraulic oil filter clog detection • Cab mirror for lower visibility • Two cab lights • Cab foot light • Cab emergency lowering device • Cab elevation alarm • One way call • Cab interference prevention mechanism • Reinforced upper frame under cover • Large left rear cab mirror • Right rear view mirror • Controller anti-theft device • Reinforced travel motor cover • Two boom lights • Boom cylinder light • Boom foot guard • Toolbox • Grease gun

**Optional Equipment** • 600mm even height grouser shoes • Additional track guides (reinforced) • Yellow rotating warning lamp

Note: This catalog may contain attachments and optional equipment that are not available in your area. And it may contain photographs of machines with specifications that differ from those of machines sold in your areas. Please consult your nearest KOBELCO distributor for those items you require. Due to our policy of continuous product improvements all designs and specifications are subject to change without advance notice. Copyright by **KOBELCO CONSTRUCTION MACHINERY CO., LTD.** No part of this catalog may be reproduced in any manner without notice.

**KOBELCO CONSTRUCTION MACHINERY CO., LTD.**

5-15, Kitashinagawa 5-chome, Shinagawa-ku, Tokyo 141-8626 JAPAN  
Tel: +81 (0) 3-5789-2146 Fax: +81 (0) 3-5789-2135  
www.kobelco-kenki.co.jp/english\_index.htm

Inquiries To:

**LOG LOADER**



# Revamped Log Handling Performance

## SK350D<sub>LC</sub>

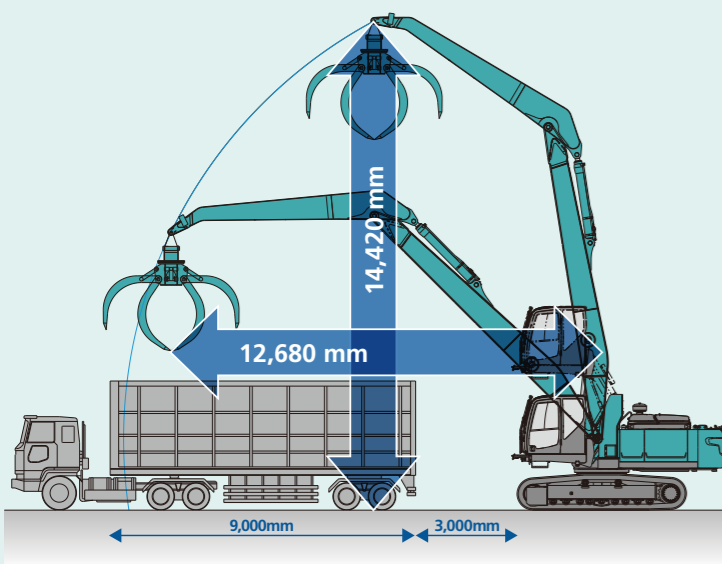
### KOBELCO's new crawler-type log loader SK350DLC

A long-awaited model change for the SK350DLC log loader, that has served Indonesia's forestry business over many years. After noting changes on site and listening to the views of users, KOBELCO has created a high-quality machine that's finally come of age. Its acclaimed work performance is now backed up with greater durability and further fuel saving. This most advanced log handling machine will meet all expectations.

## Ideally equipped for log handling in large timber stockyards

### Greater working ranges allow more efficient loading

The specialized attachment made up of 9.3m straight boom + 6.0m arm can service a larger working zone in terms of both height and area. It's also compatible with all types of trailers and ships, for smooth handling without wasted movement.



### NEW Lift capacity of around 2 ton assured for extended working ranges

2-ton load at the attachment tip can be assured for almost all working ranges, delivering steady, continuous grab>swing>load operations unaffected by the angle or alignment of the machine.

#### Lift capacity

At maximum working radius (14,080mm) : 5.0 / 3.9 ton  
At maximum working height (14,420mm) : 5.9 / 5.9 ton  
(rating over front / rating over side or 90 degrees)

### NEW Lower fuel consumption with new power plant design

The latest engine and hydraulic equipment is installed for a big cut in fuel consumption over the earlier SK350-8, while maintaining the same work performance. It helps keep running costs down.

### Large capacity fuel tank for fewer fill-ups

Fitted with a fuel tank specially designed for log loaders, with 15% more capacity than that of standard forestry machines. Coupled with improved fuel performance, it means a longer interval between fill-ups than with the previous model.

Fuel tank : 580 L  
(Excavators of the same class : 503 L)

### 800mm width even height grouser shoes fitted as standard

800mm even height grouser shoes with low contact pressure that can handle unpaved ground and other types of surfaces fitted as standard. Track guides to prevent de-tracking have been reinforced, and additional track guides are optionally available.



### NEW Multi-part counterweight simplifies transportation

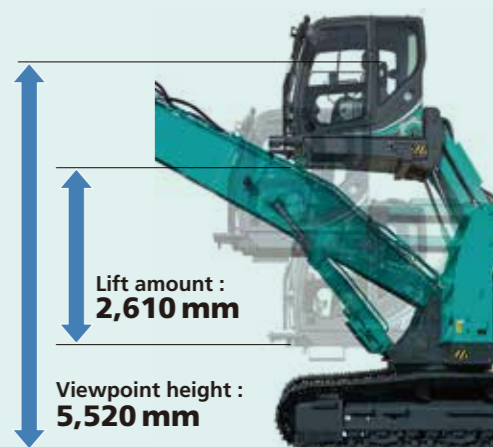
New multi-part style counterweight can be disassembled by taking out inner section (earlier model had additional weight + add-on weight). Each section has hooks for lifting, and disassembly for transportation and maintenance requires only a 10-ton crane.



Counterweight : approx. 12.67 ton  
(8.37 ton + 4.30 ton when disassembled)

### NEW Link-type elevator cab with less projection to front

Wide visibility assured from a point more than 5m high. Designed so that the cab whether elevated or lowered does not project beyond front of the crawlers, so machine can work close up to a trailer. The sophisticated link structure dampens shaking and lessens operator's build-up of fatigue. Cab raising and lowering is smooth and swift.



### NEW Assured working visibility for nighttime/low light conditions

7 front working lights in total fitted to the machine body, cab and attachment.



•Top left: 2 cab lights •Top right: Cab foot light •Bottom left: 2 boom lights •Bottom right: Boom cylinder light

### Cab impact prevention mechanism prevents grapple approaching cab

If front attachment enters impact danger zone during operations this mechanism, installed as standard, activates an alarm to alert personnel and stops the machine.



### Durability, safety and maintenance features fitting a specialist machine



•Top left: Upper frame under cover •Top center: Cab foot mirror •Top right: Right console switches •Bottom left: Central lubrication (elevator cab) •Bottom center: Double-element air cleaner •Bottom right: Air conditioner condenser bug net

※ Equipped with additional track guides (option)